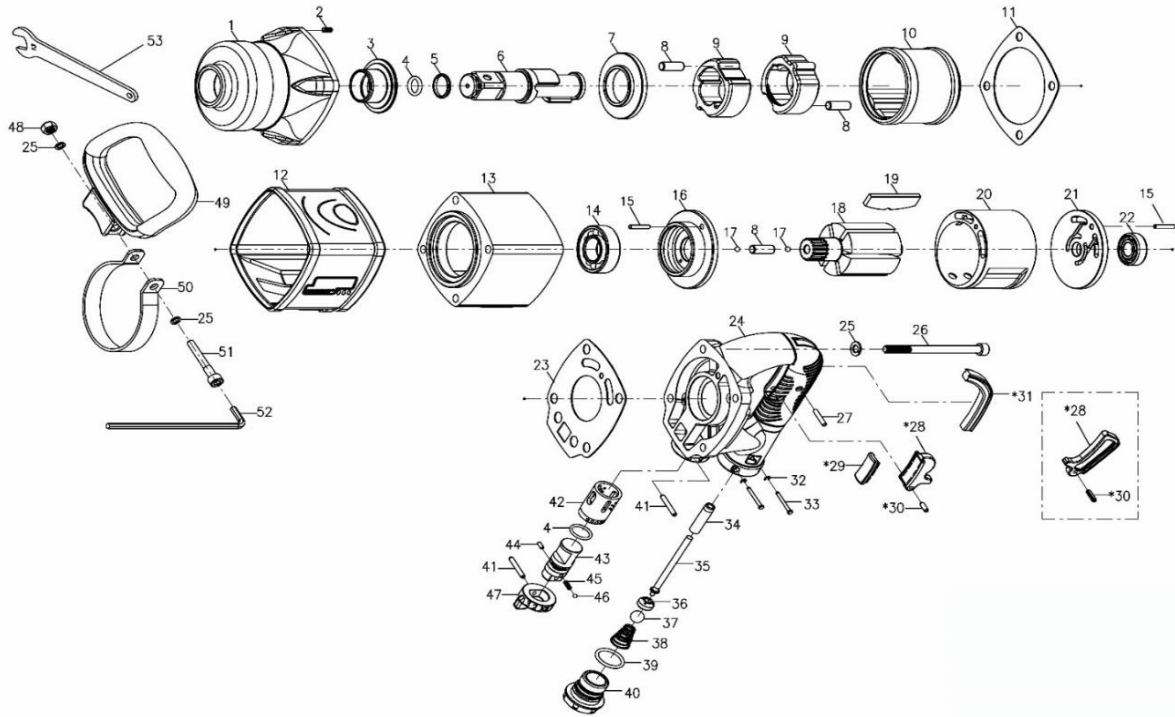


1" PROFESSIONAL AIR IMPACT WRENCH



TPT-2825

Index No.	Part No.	Description	Q'ty
1	2826-002B	Hammer Case	1
2	00-4303	Helicoil(M8x1.5D)	4
3	2824-010	Anvil Bushing	1
4	00-4124	O-Ring(P18)	2
5	310-038	Anvil Collar	1
6	2824-011A8	Anvil	1
	2824-011B8-B	Anvil	1
7	2824-019	Hammer Cage	1
8	2824-016	Hammer Pin	3
9	2824-017	Hammer	2
10	2824-012	Hammer Cage	1
11	2826Q-030	Front Gasket	1
12	2825-043	Housing Band	1
13	2826Q-001	Motor Housing	1
14	00-2301	Ball Bearing(6205Z)	1
15	00-3330	Spring Pin(ψ4×20L)	2
16	2826Q-005	Front End Plate	1
17	00-3823	Steel Ball(ψ5)	2
18	2824-007	Rotor	1
19	2824-008	Rotor Blade	6
20	2826Q-006	Cylinder	1
21	2826Q-009	Rear End Plate	1
22	00-2304A	Ball Bearing(6202)	1
23	2826Q-032	Rear Gasket	1
24	2826Q-004B-B	Hand Frame	1
25	00-1808	Spring Washer (M8)	6
26	00-0158	Cap Screw	4
27	00-3321	Spring Pin(ψ4×22L)	1
*28	315S-024	Inner Trigger	1

Index No.	Part No.	Description	Q'ty
*29	315S-025	Trigger Rubber	1
*30	00-3312	Spring Pin (φ4x12L)	1
*31	315F-039	Rubber Protector	1
*28	315S-023	Outer Trigger	1
*30	00-3312	Spring Pin (φ4x12L)	1
32	00-3207	Snap Ring (E2.5)	2
33	315S-034-B	Pin	2
34	315S-026	Valve Bushing	1
35	315S-027	Valve Stem (Inner)	1
36	568-026	Bushing	1
37	00-3809	Steel Ball (1/2")	1
38	315S-029	Spring	1
39	00-4188	O-Ring (φ21.8xφ2.4)	1
40	315F-025A-B	Air Inlet (1/2"PF)	1
	315F-025B-B	Air Inlet (1/2"PT)	
	315F-025C-B	Air Inlet (1/2"NPT)	
41	00-3338	Spring Pin (φ4x30L)	2
42	328-020	Reverse Valve Bushing	1
43	315S-021	Reverse Valve	1
44	00-3307	Spring Pin (φ3x8L)	1
45	322-023-B	Spring	1
46	00-3802	Steel Ball (5/32")	1
47	315S-022	Reverse Knob	1
48	00-2001	Lock Nut (M8)	1
49	2824-026-B	D-Type Handle	1
50	2824-024	Handle Clamper	1
51	00-0167	Cap Screw (M8x60L)	1
52	00-3909	6 mm Hex. Wrench	1
53	531-030	Spanner	1