



The choice of perfection

# Operating instructions for **easyclean365+** Gun

## 1. Safety indications

- Please wear an appropriate ear protection in order to avoid health harm by the occurrent sound pressure noise.
- Please wear protective goggles in order to avoid eye injury by swirled up particles.
- Please always use the **easyclean365+** Gun in a well-ventilated work environment.
- Please do not use any acidic, alkaline and/or easily inflammable cleaning agents.
- Please wear an appropriate breathing protection in order to avoid health harm by the sprayed cleaning agent.
- Do not ever point the **easyclean365+** Gun at face or body!
- Please do not keep the **easyclean365+** Gun within the easy reach of children.
- Please always check if all connections are solid and if the air lines are intact before using the **easyclean365+** Gun.

## 2. Product information and mode of operation

- The **easyclean365+** Gun is operated with a pressure of 5,5 - 9 bar.
- The user can either choose an operation with cleaning agent or exclusively with air.
- The combination of cleaning agent and compressed air bursts the dirt. By means of the inner hose which rotates by 360° the dirt particles are pressed onto the inner surface of the discharge funnel.

## 3. Fields of operation

- designed for the interior and exterior cleaning within the Car Wash range

## 4. Preparation and operation of the **easyclean365+** Gun

- The 1 l bottle needs to be filled with the desired cleaning agent and fixed at the gun.
- The compressor hose needs to be attached to the inlet of the gun.
- By keeping a distance of approx. 2 cm from the surface to be cleaned the gun is started when pressing the lever.
- The surface to be cleaned needs to be circled in a slow way and the duration of the application is adapted to the extent of dirt.
- Abrupt and quick moves are not recommended.
- If the lever is vertical, cleaning agent is used.
- By switching into the operation "exclusively with air" the cleaning agents are removed by the quick rotation of the inner hose and the surface to be cleaned is dried.
- The cleaned spots need to be gently wiped by using a soft cloth.
- After using the nozzle (discharge funnel) needs to be rinsed with clear water and the dirt particles are easily removed from the discharge funnel by pressing the lever.

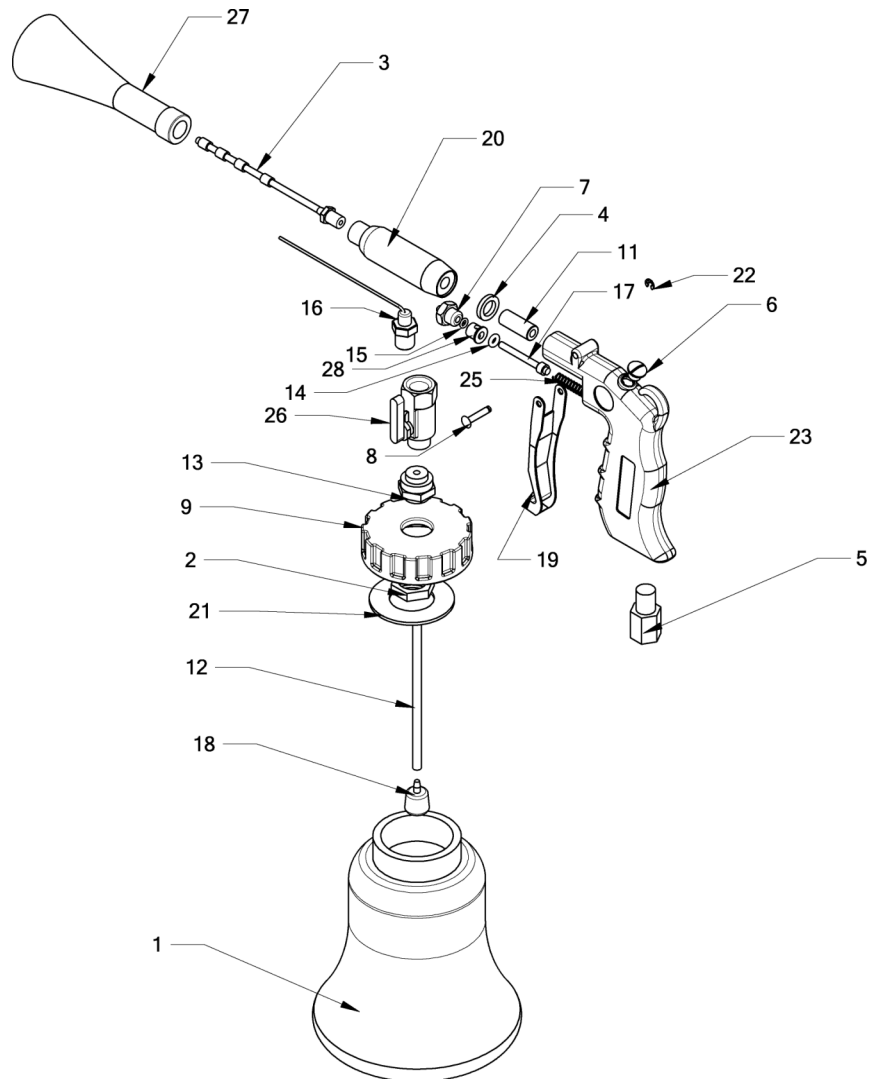
## 5. Maintenance

The **easyclean365+** Gun needs to be completely cleaned after every use. The components which got in contact with the cleaning agents are then rinsed with warm water and removed from any residue. The bottle should be detached when being rinsed and then stored at a clean place.

## 6. Technical Specifications

- Working pressure 5,5 - 9 bar compressed air
- Compressed air connection 1/4" F

## 7. List of spare parts



Position	R+M Nr.	Description
1	106996713	Bottle 1 l
3	106996712	Vibration hose
5	57620	Nipple brass 1/4F/M
9	106996714	Lid
16	106996711	Suction hose
21	106996715	Seal
26	106996716	Ball valve
27	106996710	Discharge funnel
12+18	106996717	Suction hose + filter (bottle)
4+11+20	106996718	Injector unit
6+7+8+14+15+19+23+25+28	106996719	Gun complete