

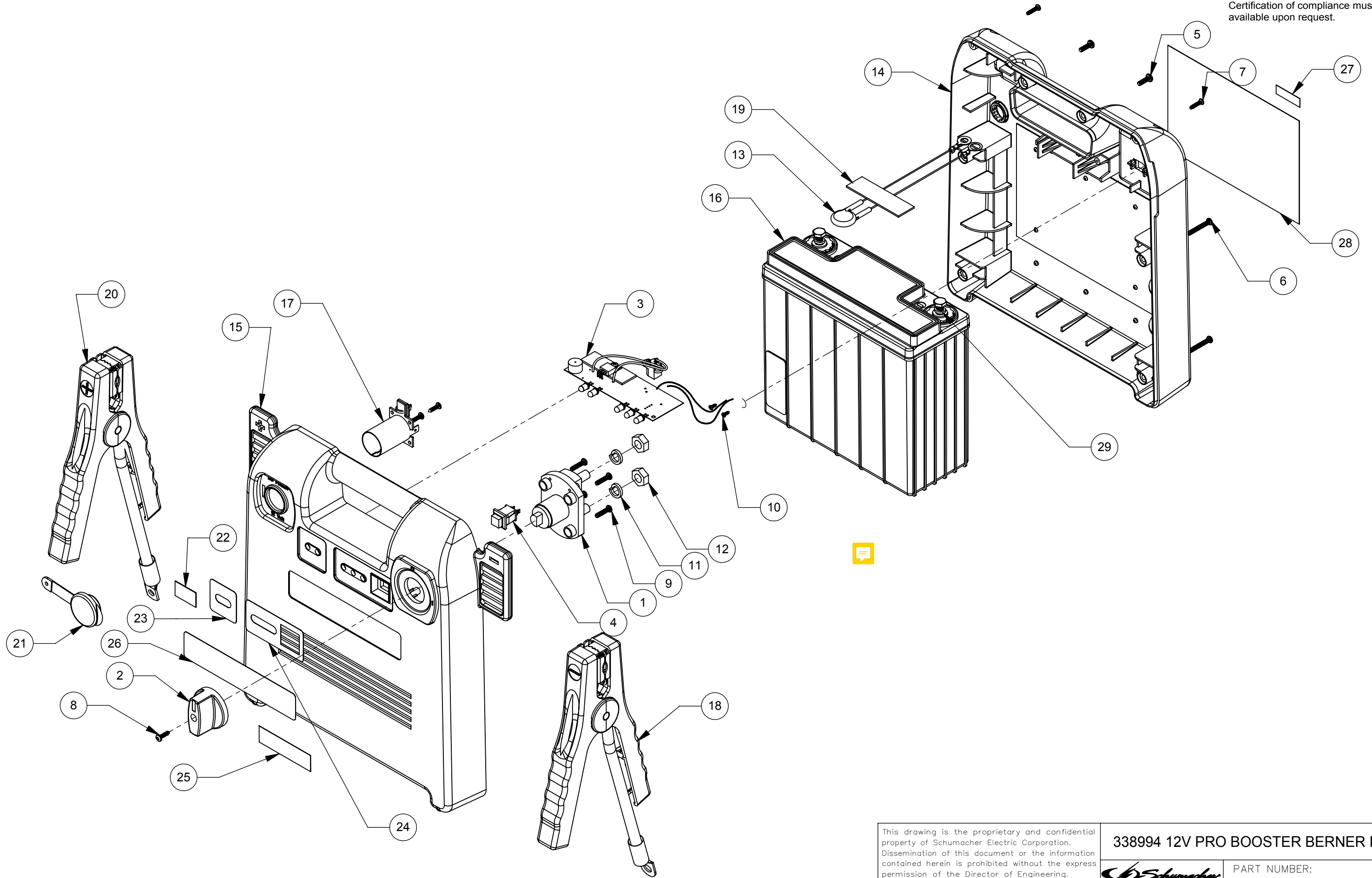
**WIRING DIAGRAM**

**NOTES:**

1. FOR DETAILED ASSEMBLY SEE WORK INSTRUCTION 94065176CWI

06					DRAWN: 12/23/16	BY: MT	This drawing is the proprietary and confidential property of Schumacher Electric Corporation. Dissemination of this document or the information contained herein is prohibited without the express permission of the Director of Engineering. Use of this document by any supplier or distributor is expressly limited to the use authorized by Schumacher Electric Corporation in providing it to you.	
05					CHECKED: 03/15/17	BY: DZ		
04					APPROVED: 03/15/17	BY: RGC		
03					SCALE: 1:3	SIZE: B		
02					ALL DIMENSIONS IN INCH(MM) UNLESS OTHERWISE SPECIFIED		THIRD ANGLE PROJECTION	
01	INITIAL RELEASE	9551	04/05/17	MT	TOLERANCES			
NO.	REVISION	ECN	DATE	SIG.	.XXX ±.004[0.10] .XX ±0.01[0.3] .X ±0.1[2.5] FRACTIONAL ±1/64 ANGULAR ±5MIN.			
							338994 12V PRO BOOSTER BERNER PL C	
							PART NUMBER: 94065176C	
							801 BUSINESS CENTER DRIVE MT. PROSPECT, ILLINOIS 60056 SOLIDWORKS SH. 1 OF 3	

Must be RoHS 2011/65/EU compliant.  
 Certification of compliance must be  
 available upon request.



This drawing is the proprietary and confidential property of Schumacher Electric Corporation. Dissemination of this document or the information contained herein is prohibited without the express permission of the Director of Engineering. Use of this document by any supplier or distributor is expressly limited to the use authorized by Schumacher Electric Corporation in providing it to you.

338994 12V PRO BOOSTER BERNER PL C



PART NUMBER:  
**94065176C**

REV:  
**00**

801 BUSINESS CENTER DRIVE  
 MT. PROSPECT, ILLINOIS 60056

SOLIDWORKS SH 2 OF 3

BILL OF MATERIALS			
ITEM NO.	PART NUMBER	DESCRIPTION	QTY.
1	0499000148	SWITCH, ON/OFF BLK PBI/PSJ	1
2	0099000678	SWITCH-KNOB	1
3	2299002844	ASSY PCB CNTRL/PWR BD 338994 BERNER	1
4	0499000084	SWITCH, PUSH RED KNOB 1A 125 VAC	1
5	5199000426	SCREW M3.5x12 PH PHST SBZP	2
6	5199000456	SCREW M3.5x25 PH PHST SZP	4
7	5100000017	SCREW M3x12 PH PHST SBZP	2
8	5199001122	SCREW M3x12 PH PHST SBLX	1
9	5199000464	SCREW M3.5x15 PH PHST NP	4
10	5199001490	SCREW M2.5x6 PH PHST SZP	2
11	5299000024	WASHER, SPRING 12.5 X 8.2 X 2.2MM	2
12	5299000030	NUT M8 X 1.25 STEEL ZINC PLATED	2
13	6294065001	JUMPER KIT PBI1812	1
14	3699002308	CASE BACK 338994 BERNER BLUE	1
15	3699002309	CASE FRONT 338994 BERNER BLUE	1
16	5799000026	BATT 16AH 12V-HAWKER (ENERSYS) GENESIS	1
17	2299002203	ASSY FIBER BOARD W/BREAKER	1
18	3899003753	CABLE 4GA BLK 59.5 IN C JAW T924	1
19	0000000723	TAPE 63X19X1.5MM ADHESIVE BACKED	1
20	3899003778	CABLE W/FUSE 4GA RED 58.5 IN C JAW T913	1
21	4999000208	COVER DC SOCKET PVC BLACK	1
22	0899006133	LABEL DC OUTPUT 12V 15A ACCESSORY PORT	1
23	0899005027	LABEL CNTRL PNL JMP START PBI1812 L	1
24	0899005028	LABEL CNTRL PNL JMP START PBI1812 R	1
25	0899009626	LABEL LOWER FRONT 338994 BERNER	1
26	0899009612	LABEL PRODUCT 338994 BERNER	1
27	0899009632	LABEL DC INPUT 17V 1A	1
28	0899009615	LABEL WARNING PBI0176C MULTI-LNG	1
29	5299000020	WASHER SPRING 9.5X6.2X1.9MM	2
30	3899003543	JMP 4GA BLK3.5 IN 913/924	1
31	0000000144	CABLE TIE 4IN BLK TYTON CABLE #T18R	2

NOT SHOWN ON THIS DOCUMENT			
ITEM NO.	PART NUMBER	DESCRIPTION	QTY
32	0099001785	MANUAL OWNERS BERNER MODELS	1
33	0899009613	LABEL CHARGE IMMEDIATELY MULTI-LNG INTL	1
34	0899009614	CARTON LABEL 338994 BERNER	1
35	3499103909	CARTON INDIVIDUAL 338994 BERNER	1
36	4999000336	EPE FOAM INSERT 50X50X40MM	1
37	2299003051CZ	TRANSFORMER CE LISTED 17V 1.0A PLUG C	1
38	0000000657	PLASTIC WRAP, 20" X 5500' X 80 GA.	.0014
39	3400200048	PAD 40" X 44"	.0735
40	3499102395	PALLET 800MM x 1200MM PLASTIC EURO 2	.0147
41	9607000773	TEST PROCEDURE 338994 BERNER	1
42	9614001062	SPEC TO PRINT DATE S/N & EAN CODE	4
43	3400600012	0.062"x60CMx1250' PERFORATED FOAM SHEET	.0008
44	4999001310	BAG POLY CLEAR 6 X 8 IN OPEN END	1
45	9614001087	SPEC TO PRINT LBL ART.338994	1

This drawing is the proprietary and confidential property of Schumacher Electric Corporation. Dissemination of this document or the information contained herein is prohibited without the express permission of the Director of Engineering. Use of this document by any supplier or distributor is expressly limited to the use authorized by Schumacher Electric Corporation in providing it to you.

338994 12V PRO BOOSTER BERNER PL C



PART NUMBER:  
**94065176C**  
 REV: **00**  
 801 BUSINESS CENTER DRIVE  
 MT. PROSPECT, ILLINOIS 60056  
 SOLIDWORKS SH 3 OF 3